



**AMEC 2009**

**National Mining Congress**

**Perth**

Les Davis - Managing Director

ASX: SLR

ABN: 38 108 779 782

[www.silverlakeresources.com.au](http://www.silverlakeresources.com.au)

# Important Notice and Disclaimer



*Silver Lake Resources Limited has prepared this presentation based on information available to it. No representation or warranty, express or implied, is made as to the fairness, accuracy, completeness or correctness of the information, opinions and conclusions contained in this presentation.*

*To the maximum extent permitted by law, none of Silver Lake Resources Limited, its directors, employees or agents, advisers, nor any other person accepts any liability, including, without limitation, any liability arising from fault or negligence on the part of any of them or any other person, for any loss arising from the use of this presentation or its contents or otherwise arising in connection with it.*

*This presentation is not an offer, invitation, solicitation or other recommendation with respect to the subscription for, purchase or sale of any security, and neither this presentation nor anything in it shall form the basis of any contract or commitment whatsoever. This presentation may contain forward looking statements that are subject to risk factors associated with gold exploration, mining and production businesses. It is believed that the expectations reflected in these statements are reasonable but they may be affected by a variety of variables and changes in underlying assumptions which could cause actual results or trends to differ materially, including but not limited to price fluctuations, actual demand, currency fluctuations, drilling and production results, reserve estimations, loss of market, industry competition, environmental risks, physical risks, legislative, fiscal and regulatory changes, economic and financial market conditions in various countries and regions, political risks, project delay or advancement, approvals and cost estimates.*

*The information in this presentation that relates to mineral resources and exploration results are based on information compiled by Mr Christopher Banasik who is a Member of the Australasian Institute of Mining and Metallurgy. Any statement herein, direct or implied, as to a potential gold deposit is conceptual in nature and a reference to the targeted gold potential and not to any JORC compliant Mineral Resource. Mr Banasik is a full time employee of Silver Lake Resources Ltd, and has sufficient experience which is relevant to the style of mineralisation under consideration to qualify as a Competent Person as defined in the 2004 edition of the JORC Code. Mr Banasik has given his consent to the inclusion in this presentation of the matters based on the information in the form and context in which it appears.*



# Agenda

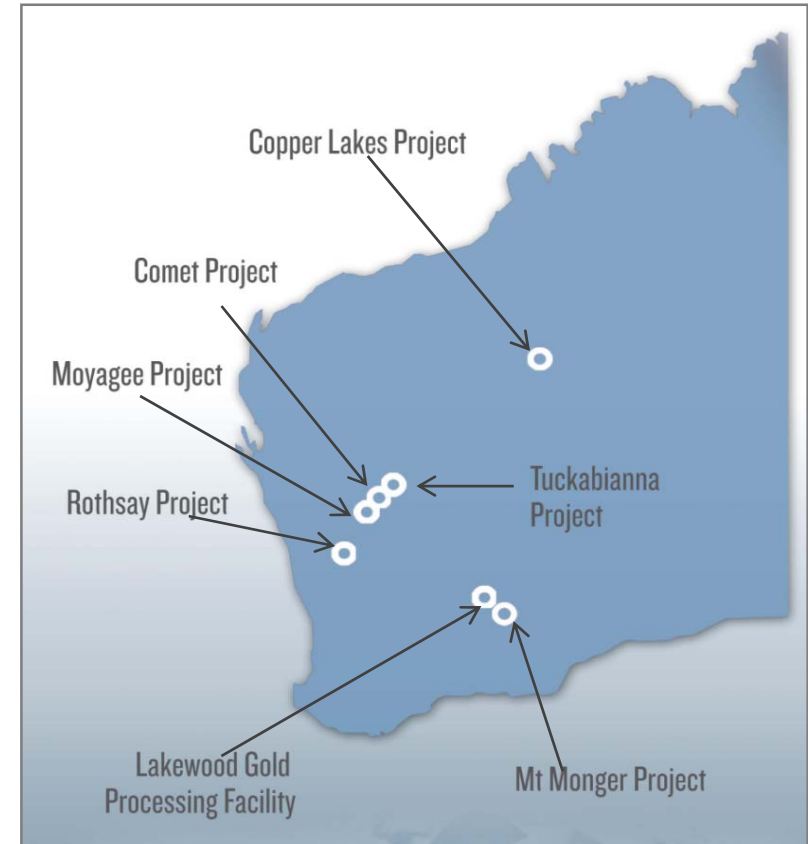


1. Company Overview
2. Business Results
3. Strategy and Objectives
4. Mount Monger Operations
5. Murchison Projects
6. Finance
7. Summary

# Company Overview



- ASX Code SLR
- Issued Securities 153.4M shares
- Market Cap \$80M (@ \$0.52)
- Unlisted Options 26.7M
- Cash & Bullion \$14.5M (31 March 2009)
- Directors
  - Les Davis - Managing Director
  - Chris Banasik - Director Exploration and Geology
  - Paul Chapman - Chairman
  - Peter Johnston - Non Executive Director
  - Brian Kennedy - Non Executive Director
  - David Griffiths - Non Executive Director



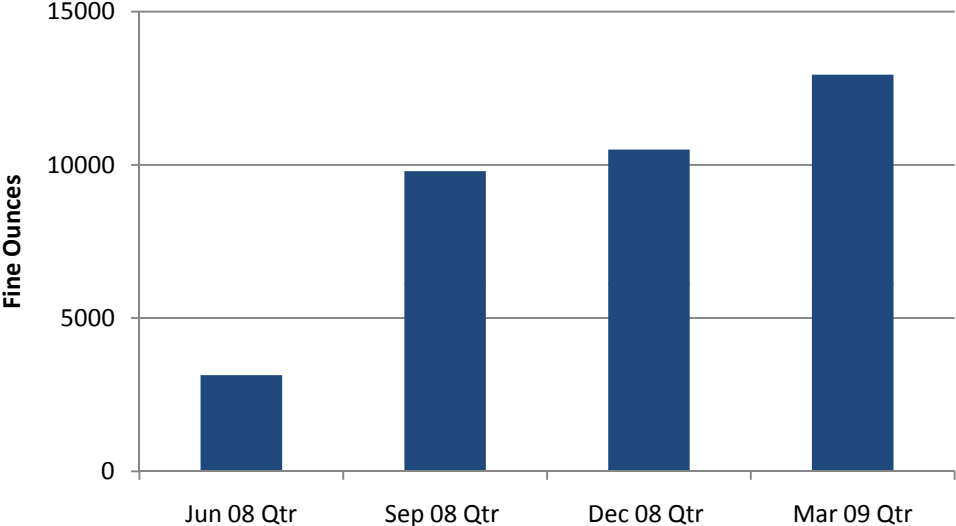
# Milestones



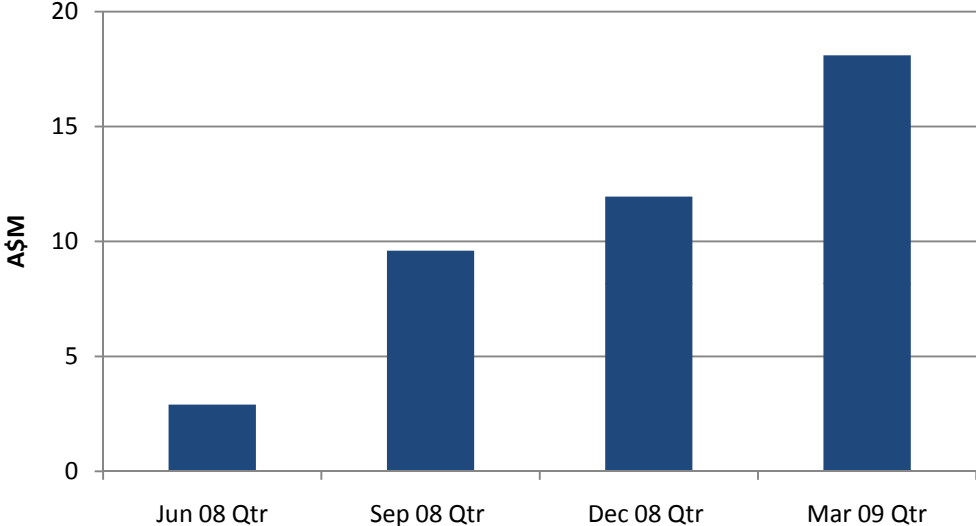
✓ H2 2007	Acquired projects (830,000 oz Au JORC resource) Acquired 300,000 tpa processing facility First ore production - Daisy Milano
✓ H1 2008	Commenced drilling Commissioned processing facility First gold pour
✓ H2 2008	Ramped up to 40,000 oz Au per annum rates Total resources of 1.5Moz Au Positive cashflow
✓ March 2009 Quarter	Poured first pure tonne of gold (32,150 oz) \$8.0 million net cashflow \$7.5 million pre tax (unaudited) profit



# Quarter on Quarter Growth



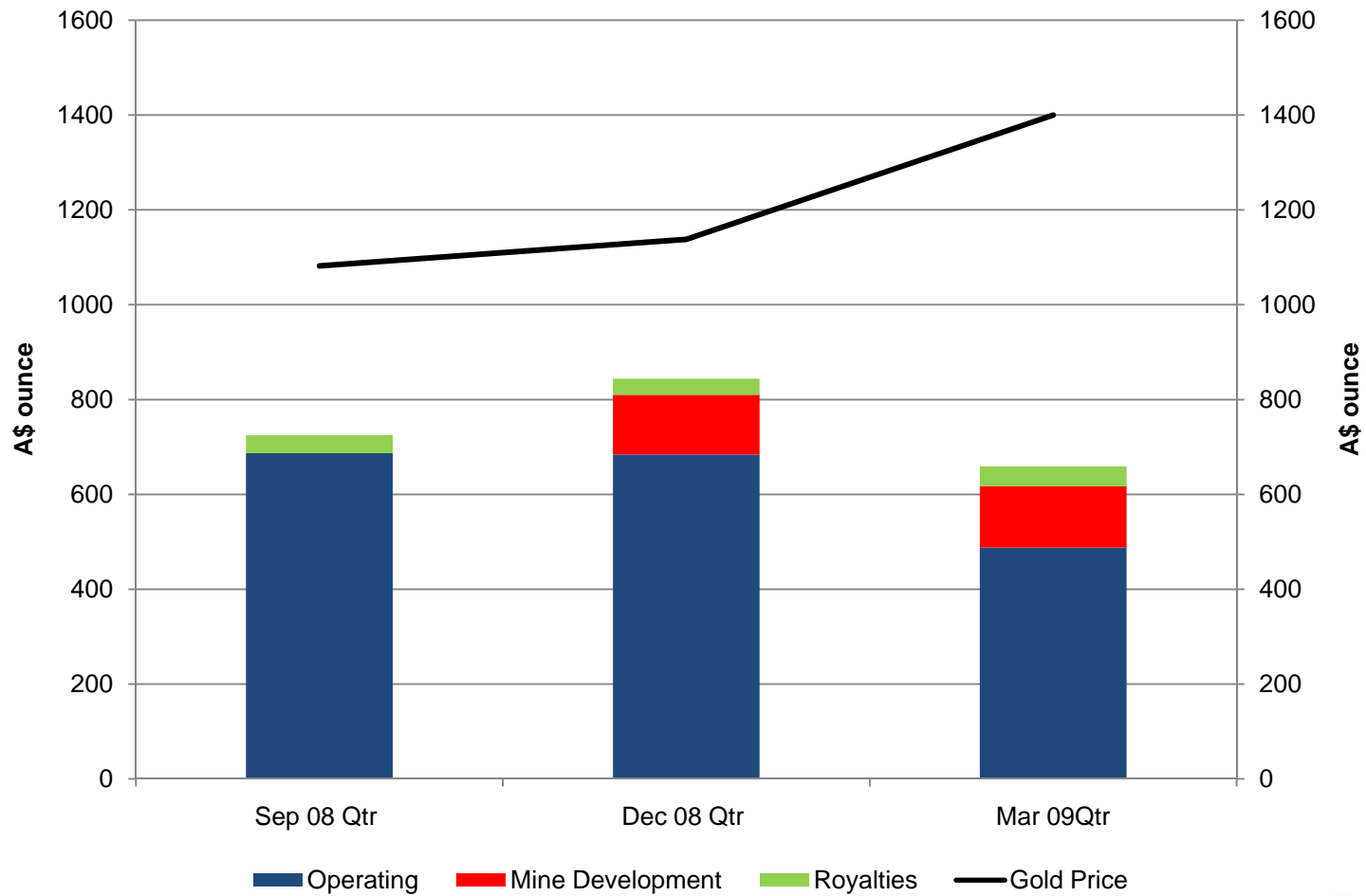
Gold Sales



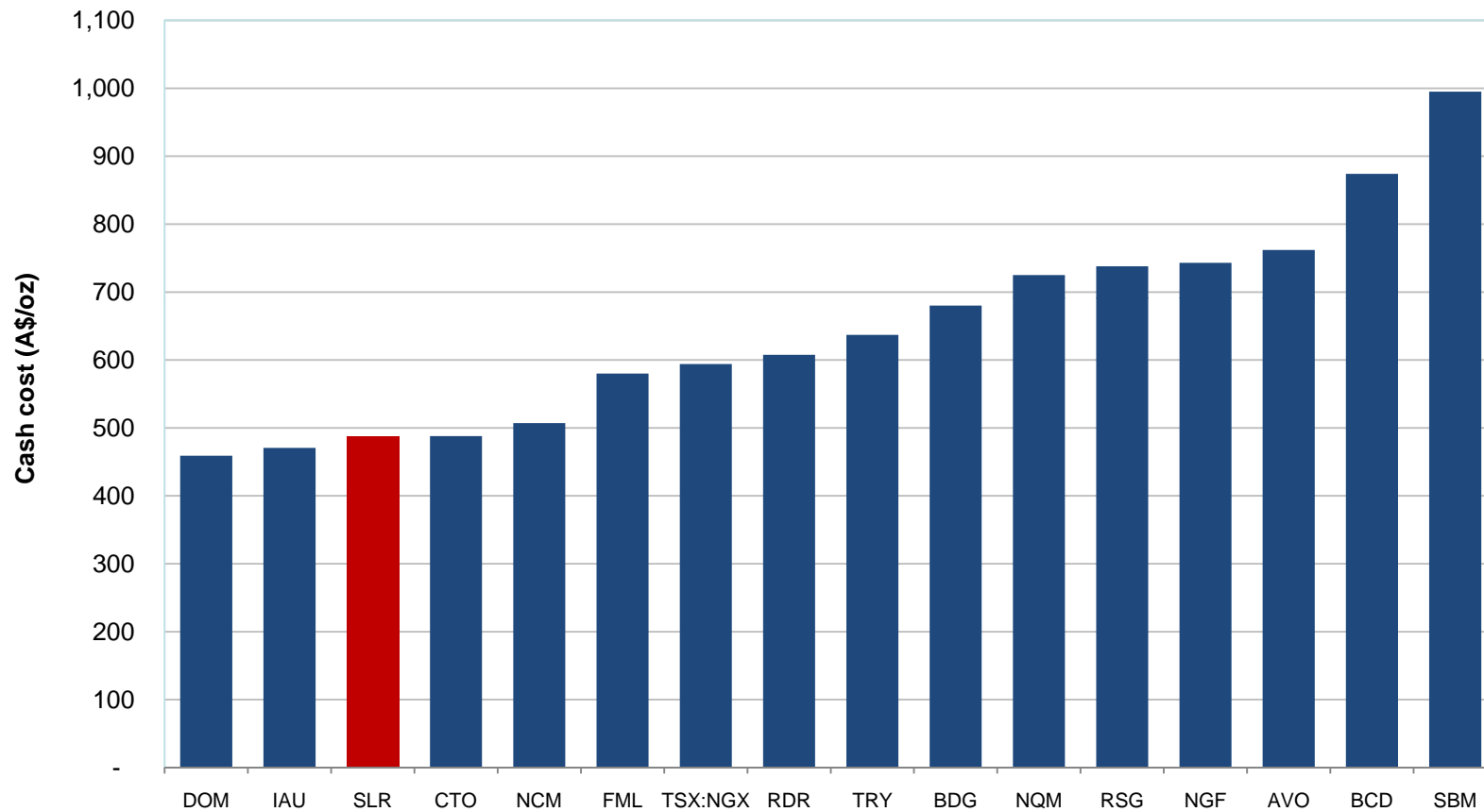
Revenue



# A\$ Unit Costs & Margins



# A\$ Cash Cost Comparison - Q1 2009

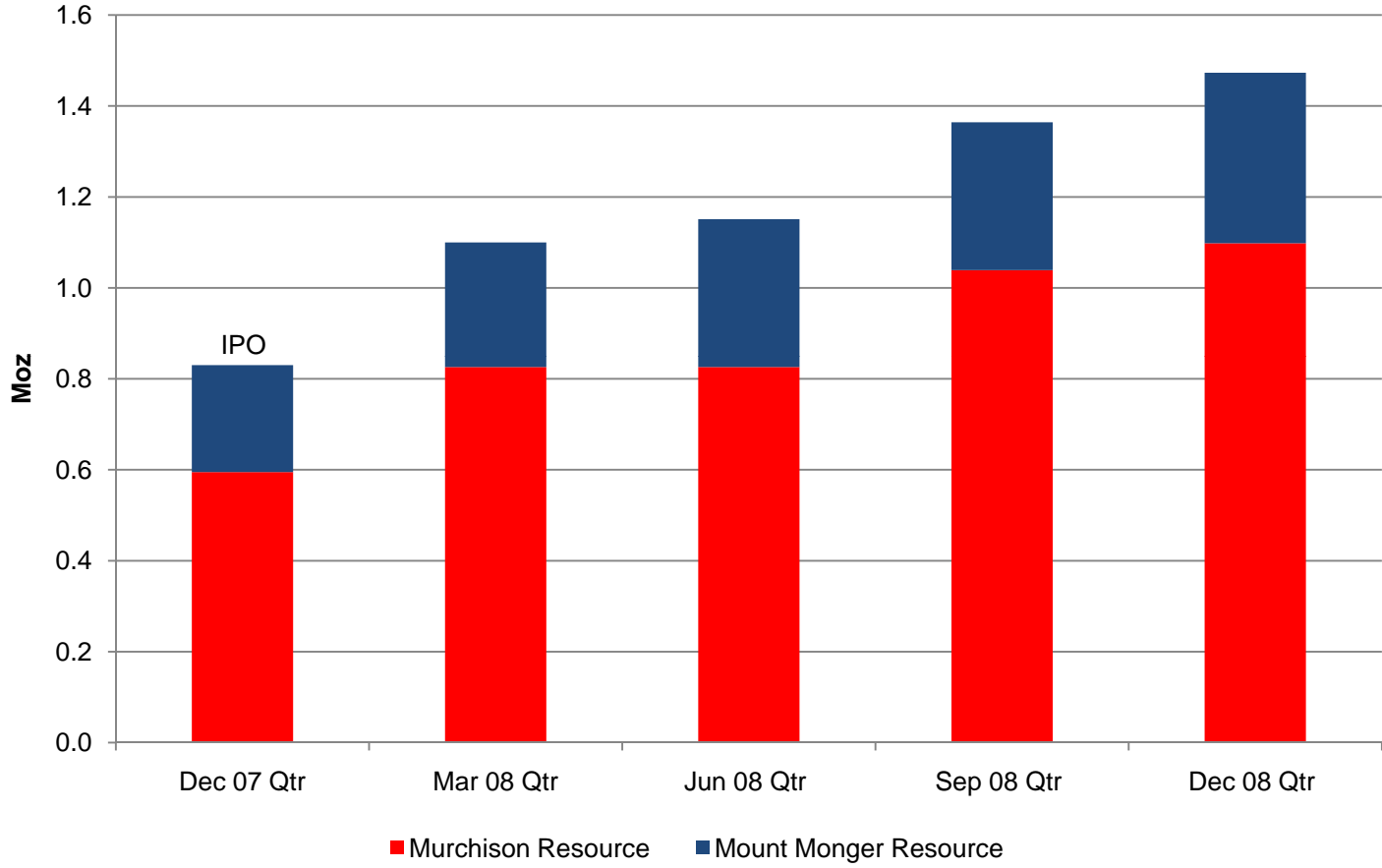


Source: public data – March 2009 Company Quarterly Reports.

Note: Cost definitions may vary between companies and therefore may not be directly comparable



# Resource Growth



SLR exploration cost <A\$10 per oz

SLR acquisition cost \$7 per oz



# Strategy & Objectives



## CORPORATE STRATEGY

- Build a disciplined, low cost, long life, gold business

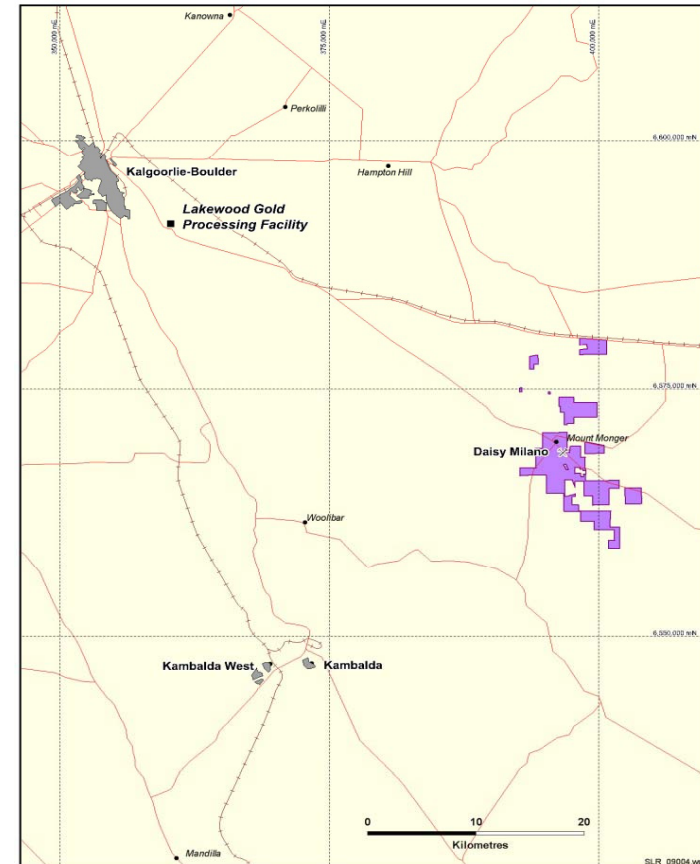
## BUSINESS OBJECTIVES

- Multiple mines and multiple mining centres
- Ounces and margin
- Exploration growth
- Sound financial position

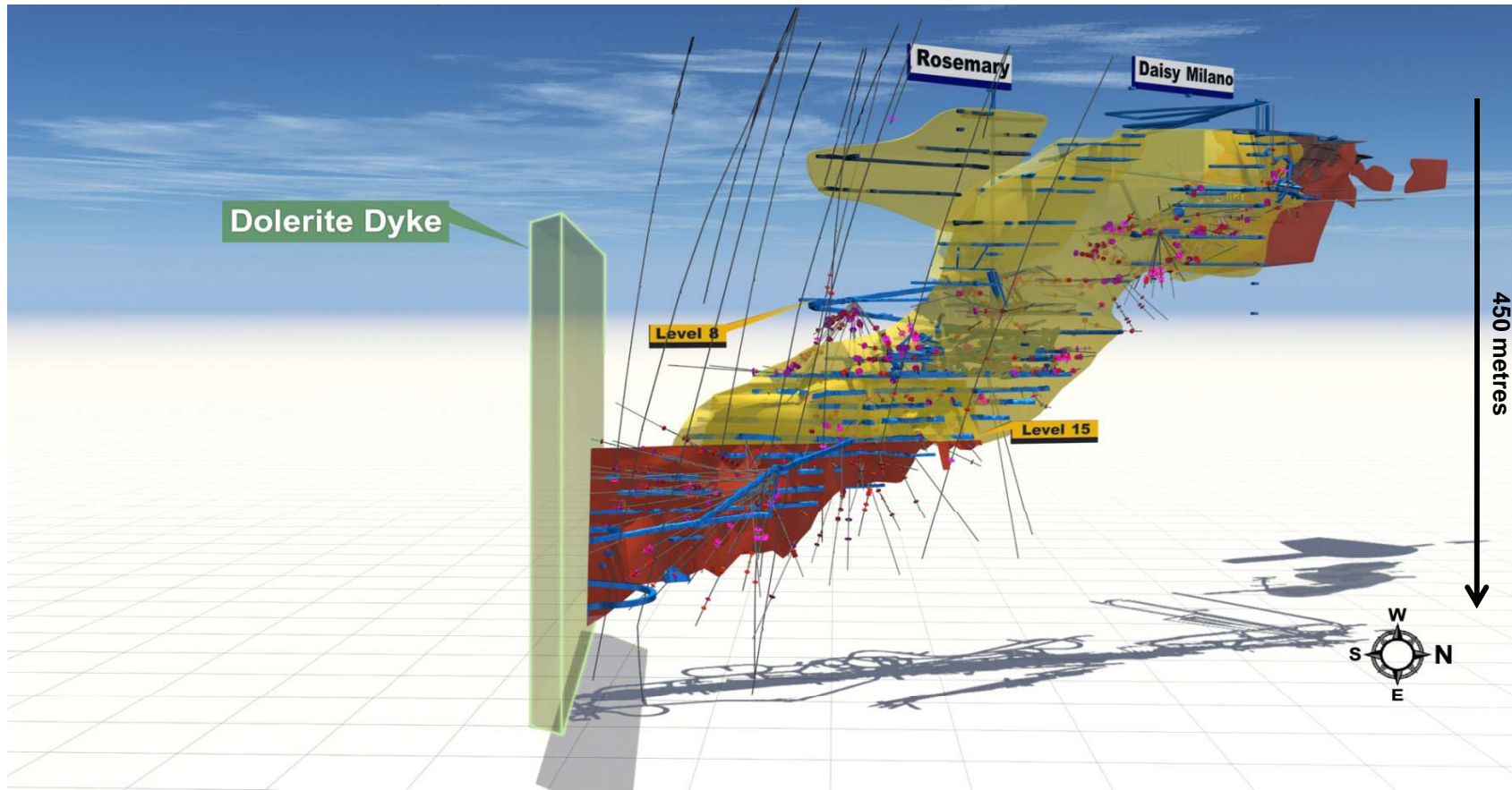


# Mount Monger - Background

- 50 km south east of Kalgoorlie:
  - suppliers / personnel / infrastructure
- Historic production >400,000 oz Au:
  - multiple underground and open cut mines
  - high grade mineralised system
  - unconsolidated gold field until 2003
- Producing from Daisy Milano underground mine:
  - 251,000 tonnes @ 30.8 g/t Au (249,000 oz)
  - 400 metre strike length
  - >1000 oz per vertical metre



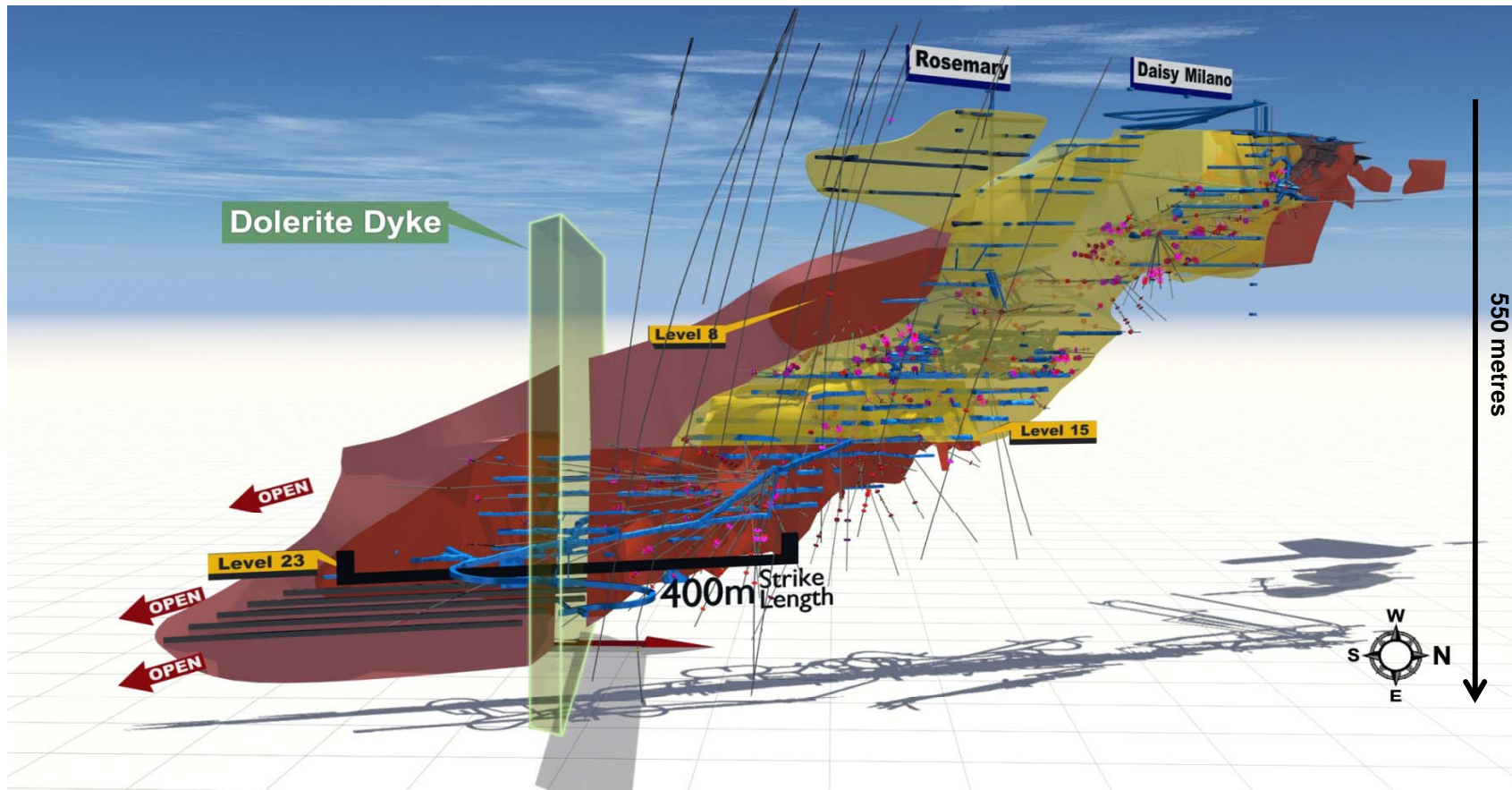
# Daisy Milano - Perception






 Mined out areas       Movable resource



# Daisy Milano - Reality



-  Mined out areas
-  Current mining areas
-  Planned mining areas

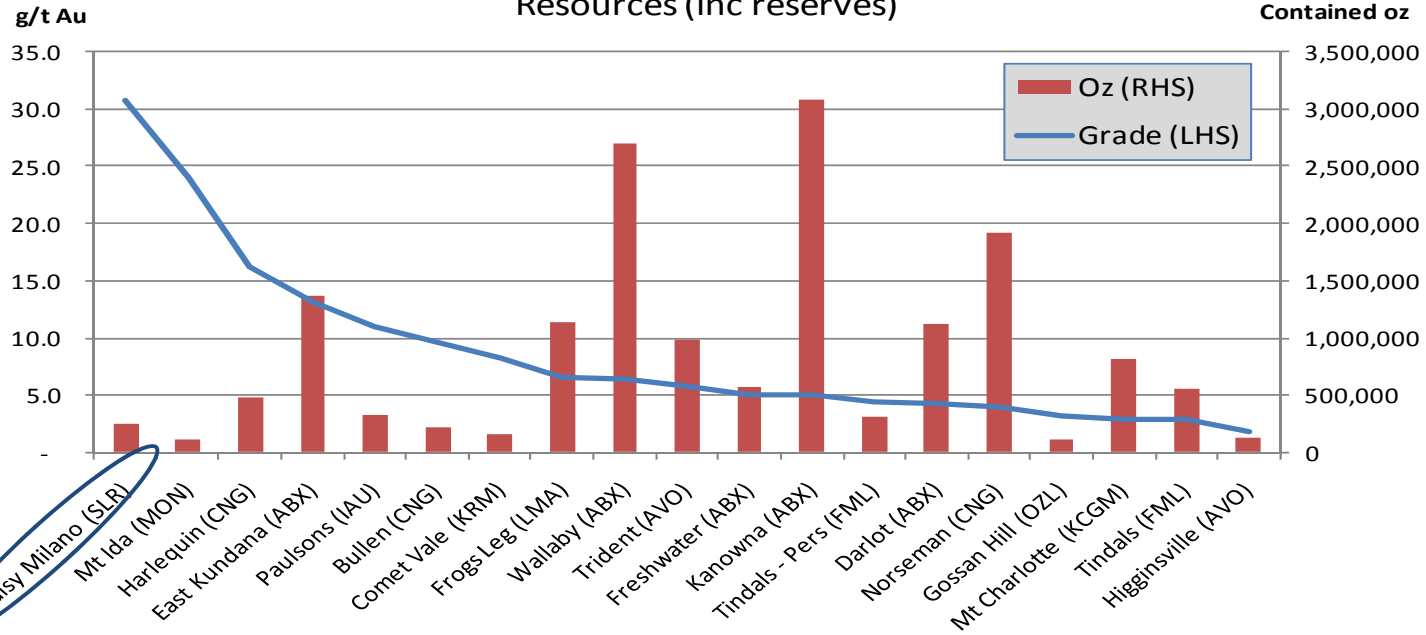


# Quality of Resource - Underground

- Daisy Milano has the highest grade underground resource of Western Australian gold mines
- Growth will come from the product of margin and volume

## WA Underground Gold Mines

Resources (inc reserves)



Source: MinMet Data Oct 2008



# Lakewood Gold Processing Facility



- Located 45 km from Daisy Milano and 5 km south east of Kalgoorlie
- Acquired November 2007:
  - \$2.4M
  - refurbishment complete
  - new gravity circuit
- 300,000 tpa capacity:
  - mains power
  - process water
- 96% recovery (+80% via gravity circuit)
- Potential feed sources:
  - 180,000 tpa from underground
  - 120,000 tpa from open pit



# Exploration

- Due diligence report (2003):
  - 2.0 to 4.5Moz Au
  - 9 independent zones <500 m depth
- Geology:
  - multiple lines of mineralisation
  - 10 km strike
- Past exploration:
  - grossly under explored
  - 3% of holes >100 m
  - restricted due to multiple owners
- Exploration plan:
  - near mine underground and open pit targets
  - step out drilling



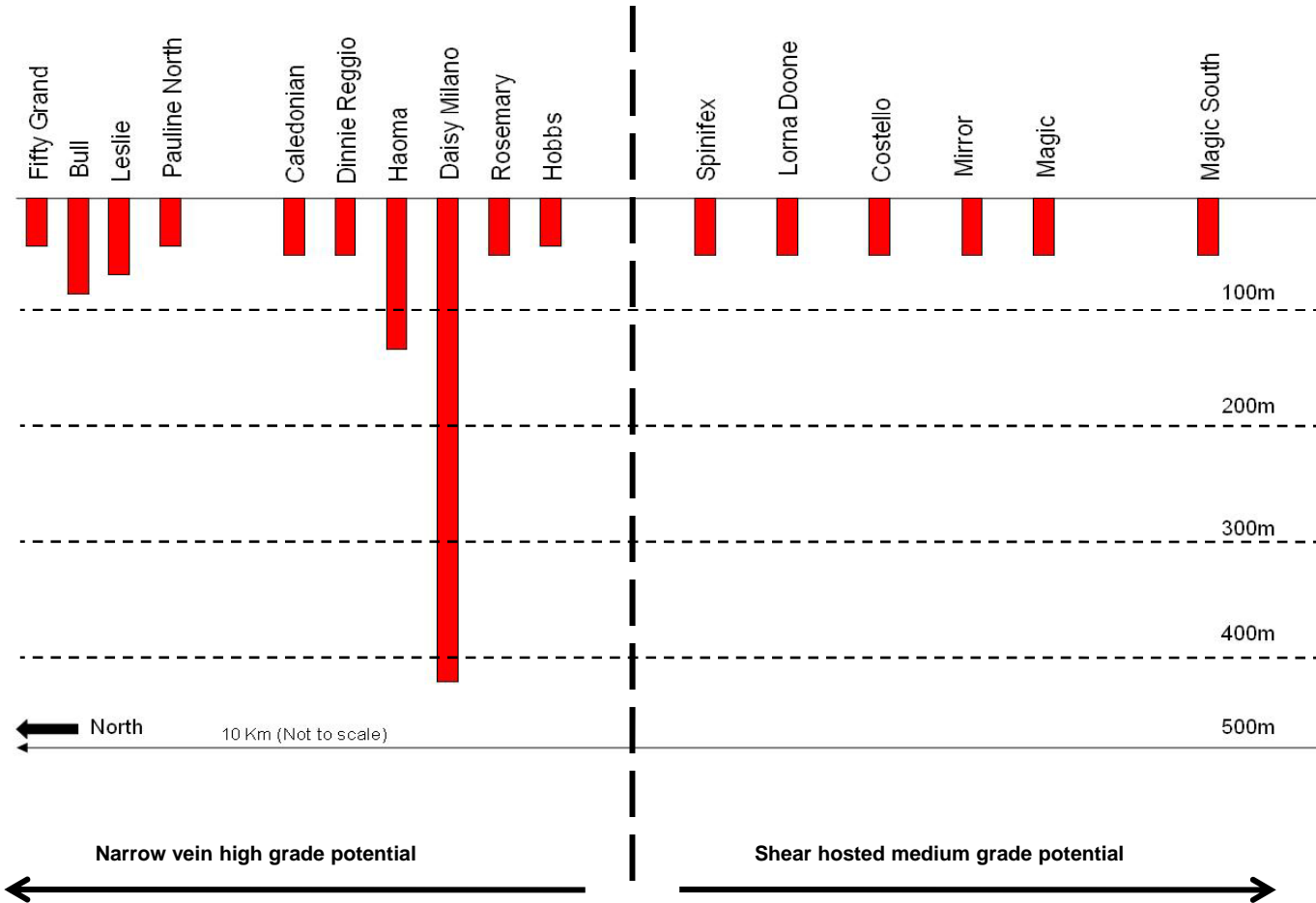
Hayden Parry – Senior Mine Geologist at Daisy Milano



# Mount Monger Fly Through



# Multi Mine Operation & Potential At Depth



Historic Mined Grade	
Daisy Main	28.4 g/t
Milano (Upper)	33.8 g/t
Milano (Lower)	15.6 g/t
Rosemary	27.4 g/t
Haoma	28.9 g/t
Dinnie Reggio	32.6 g/t
Caledonian	7.9 g/t
Pauline	11.8 g/t
Leslie	21.8 g/t
Bull	28.6 g/t
<b>Average</b>	<b>23.7 g/t</b>



# Mount Monger - Summary

## UNDERGROUND

- Daisy Milano
  - >40,000 oz Au per annum
  - significant high grade shoot south of dyke
  - 5 year life of mine

## OPEN PIT

- Christmas Flats
  - commence June 2009
- Mining Studies
  - Costello, Lorna Doone & Magic

## LAKEWOOD MILL

- Assessing low capital expansion options

## EXPLORATION

- Early success at Haoma & Caledonian
- Drilling Leslie & Magic
- Highly prospective, under explored tenement holding

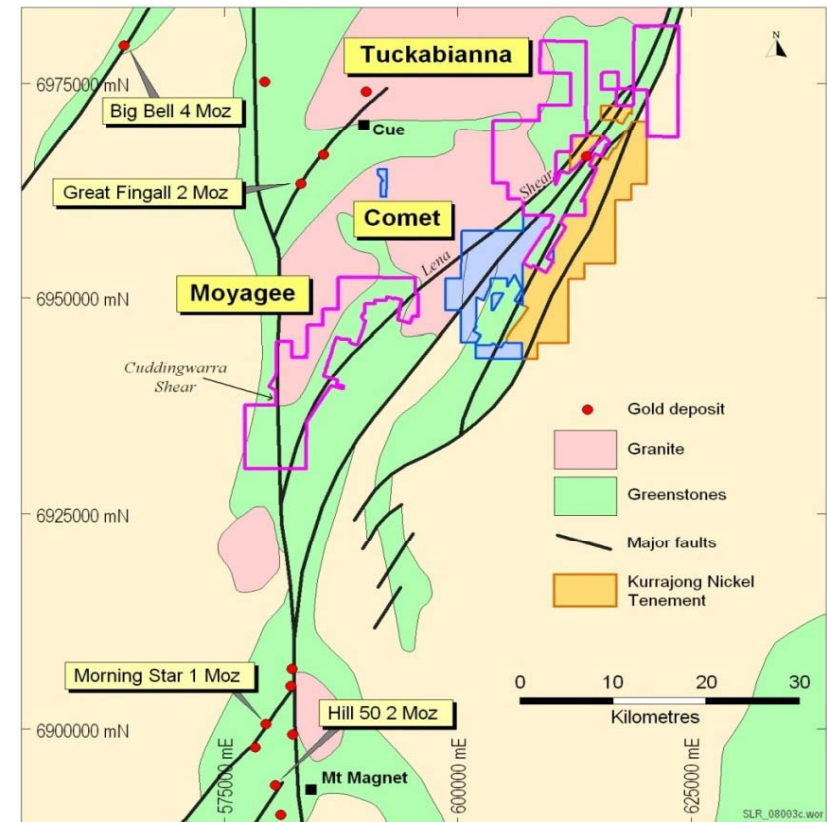


High Grade Mineralisation 21 Level at Daisy Milano



# Murchison Projects Summary

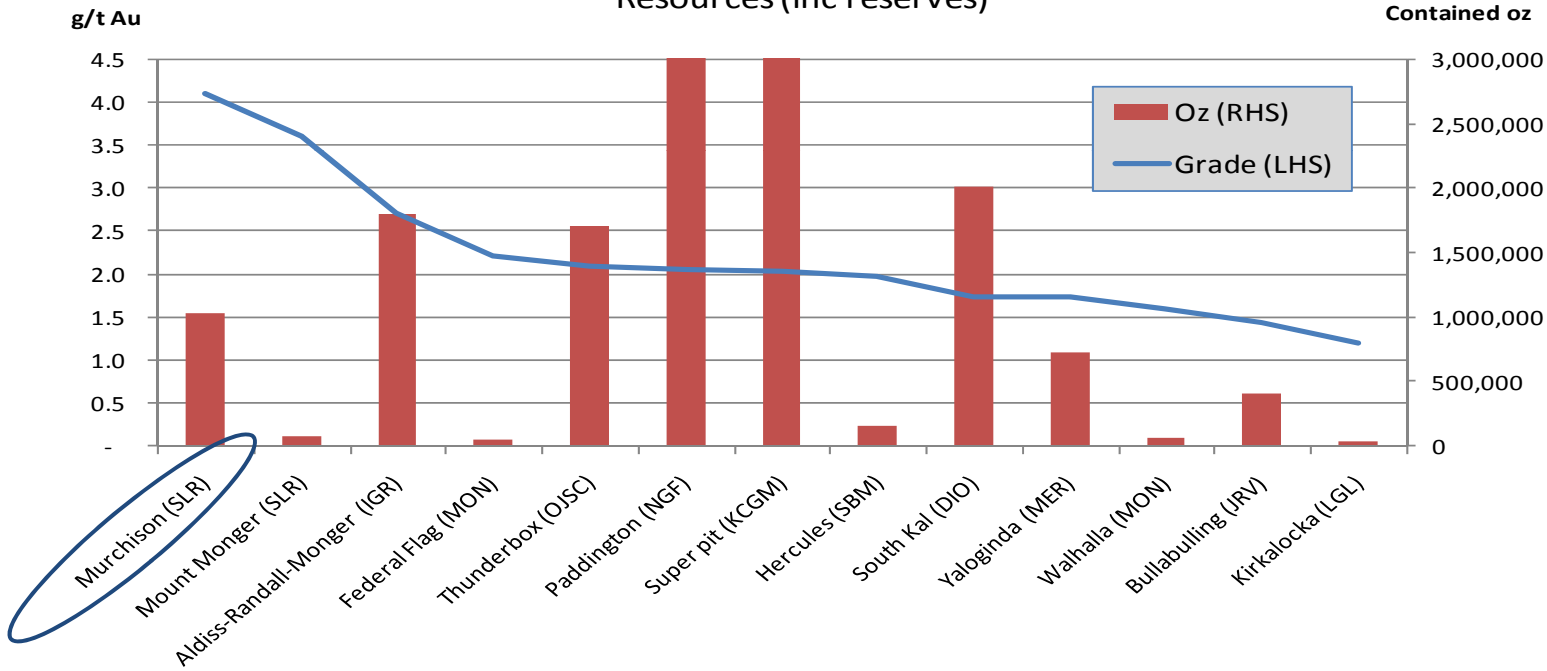
- 7,821,800 tonnes at 3.80 g/t Au for 965,400 oz
- Surrounded by multi Moz Au deposits
- 65 km strike
- Under drilled >100 m
- Exploration upside 3Moz Au
- Pre-feasibility study complete:
  - low capital options
  - reviewing milling options



# Quality of Resource - Open Pit

- Murchison projects offer high grade open pit production

**WA Open Pit Gold Mines**  
Resources (inc reserves)



Source: MinMet Data Oct 2008



- Financial position (31 March 2009):
  - Cash & bullion: \$14.5M
  - Strong cashflow >\$2M per month
  - Pre tax (unaudited) profit \$7.5M
- No debt
- No hedging
- Corporate :
  - consolidation inevitable
  - mergers, joint ventures and acquisitions



44.7 kg Dore = ~1,150 fine ounces

# Why Silver Lake Resources?

- Experienced and capable team
- High grade producing asset:
  - >40,000 oz Au per annum
  - 300,000 tpa processing facility
  - lower quartile of total cash costs
- Emerging open pit production:
  - pipeline of economic resources
- Strong cashflow & profitable
- Significant exploration upside:
  - 1.5Moz Au resource base
  - 2 to 5Moz Au potential
- Growth:
  - two large production centres
  - multiple surface and underground mines



Gold Ore from Daisy Milano 23 Level





# Presentation Appendix

ASX: SLR  
ABN: 38 108 779 782

[www.silverlakeresources.com.au](http://www.silverlakeresources.com.au)

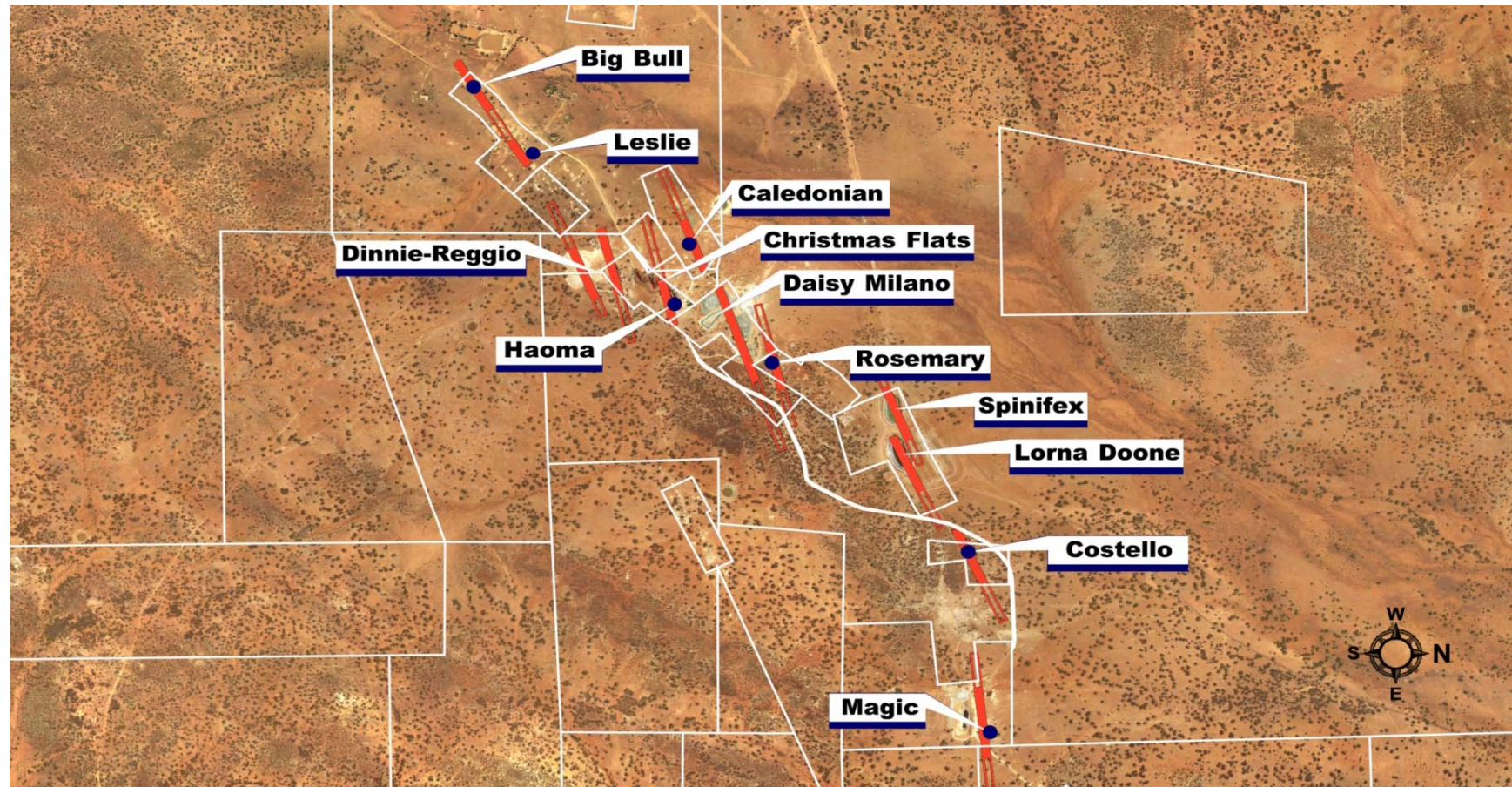
# Resource Tabulation



Deposit	Measured Resources			Indicated Resources			Inferred Resources			Total Resources		
	Ore t '000s	Grade g/t Au	Total Oz Au '000s	Ore t '000s	Grade g/t Au	Total Oz Au '000s	Ore t '000s	Grade g/t Au	Total Oz Au '000s	Ore t '000s	Grade g/t Au	Total Oz Au '000s
Daisy Milano	93.6	37.9	114.1	65.4	20.8	43.7	92.0	30.8	91.2	251.0	30.8	249.0
Christmas Flats	-	-	-	206.5	3.5	23.0	247.2	3.5	28.0	453.7	3.5	51.0
Costello	-	-	-	-	-	-	94.0	3.7	11.2	94.0	3.7	11.2
Lorna Doone	-	-	-	-	-	-	111.0	4.0	14.3	111.0	4.0	14.3
Magic	-	-	-	-	-	-	288.2	5.3	49.4	288.2	5.3	49.4
<b>Total Mount Monger</b>	<b>93.6</b>	<b>37.9</b>	<b>114.1</b>	<b>272.0</b>	<b>7.6</b>	<b>66.7</b>	<b>832.4</b>	<b>7.3</b>	<b>194.1</b>	<b>1,198.0</b>	<b>9.7</b>	<b>374.9</b>
Comet	-	-	-	1,709.1	3.6	198.3	572.2	5.1	92.9	2,281.2	4.0	291.2
Moyagee	-	-	-	-	-	-	820.2	8.5	224.2	820.2	8.5	224.2
Tuckabianna	-	-	-	2,327.1	2.8	212.1	2,393.2	3.1	237.9	4,720.3	3.0	450.0
<b>Total Murchison</b>	<b>-</b>	<b>-</b>	<b>-</b>	<b>4,036.2</b>	<b>3.2</b>	<b>410.4</b>	<b>3,785.6</b>	<b>4.6</b>	<b>554.9</b>	<b>7,821.8</b>	<b>3.8</b>	<b>965.4</b>
Rothsay	-	-	-	-	-	-	591.2	7.0	132.9	591.2	7.0	132.9
<b>Total Silver Lake</b>	<b>93.6</b>	<b>37.9</b>	<b>114.1</b>	<b>4,308.2</b>	<b>3.4</b>	<b>477.2</b>	<b>5,209.2</b>	<b>5.3</b>	<b>881.9</b>	<b>9,610.9</b>	<b>4.8</b>	<b>1,473.1</b>



# Multiple Lines of Mineralisation



# Contact



## Head Office:

31 Malcolm Street

West Perth WA 6005

Phone: +61 8 6313 3800

Fax: +61 8 6313 3888

Website: [www.silverlakeresources.com.au](http://www.silverlakeresources.com.au)

## Contact:

Les Davis

*Managing Director*

Mobile: 0428 273 501

[ldavis@silverlakeresources.com.au](mailto:ldavis@silverlakeresources.com.au)

Chris Banasik

*Director of Exploration and Geology*

Mobile: 0428 956 911

[cbanasik@silverlakeresources.com.au](mailto:cbanasik@silverlakeresources.com.au)

